

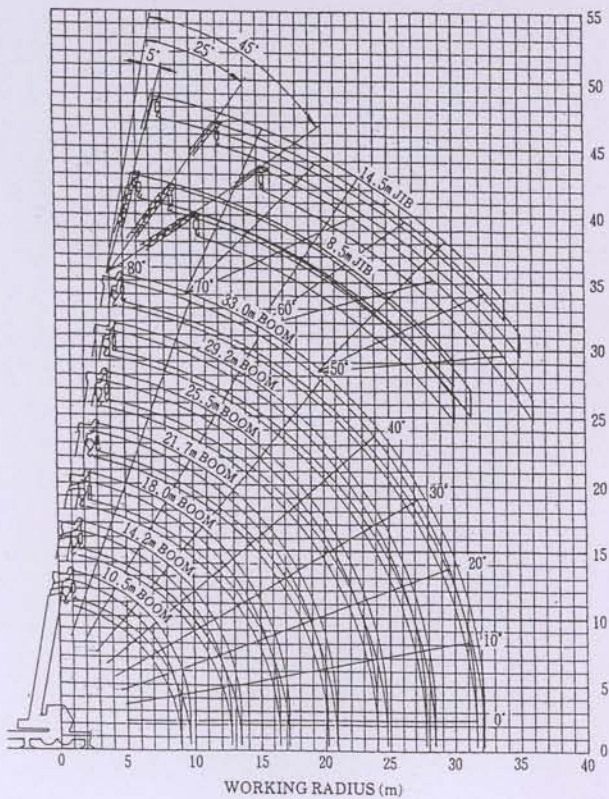
OUTRIGGERS FULLY EXTENDED + FRONT JACK (360°)
 OUTRIGGERS FULLY EXTENDED (OVER REAR, OVER SIDES)

Unit : ton

A	10.5m	14.2m	18.0m	21.7m	25.5m	29.2m	33.0m
B(m)							
1.5	*30.00						
3.0	25.00	20.00	16.00				
3.5	25.00	20.00	16.00	12.00			
4.0	22.90	20.00	16.00	12.00	11.50		
4.5	21.00	20.00	16.00	12.00	11.50		
5.0	19.40	18.40	16.00	12.00	11.50	9.00	
5.5	17.70	16.80	14.75	12.00	11.50	9.00	7.00
6.0	16.20	15.30	13.70	12.00	11.50	9.00	7.00
7.0	13.70	12.65	11.95	11.00	10.00	9.00	7.00
8.0	11.40	10.65	10.55	10.20	8.90	8.20	7.00
9.0		8.85	8.75	9.20	8.05	7.45	6.25
10.0		7.20	7.10	7.50	7.30	6.75	5.70
12.0		5.00	4.90	5.25	5.60	5.65	4.80
14.0			3.50	3.85	4.15	4.30	4.10
16.0			2.50	2.85	3.15	3.30	3.40
18.0				2.15	2.40	2.55	2.65
20.0				1.60	1.85	2.00	2.10
22.0					1.40	1.55	1.65
24.0						1.20	1.30
26.0						0.90	1.00
28.0							0.75
30.0							0.50

A = BOOM LENGTH B=WORKING RADIUS

WORKING RADIUS - LIFTING HEIGHT



Unit : ton

. Outriggers fully extended + Front jack (360°) . Outriggers fully extended (Over rear . Over sides)												
C	33.0m + 8.7m						33.0 + 14.5m					
D	5.0°		25°		45°		5°		25°		45°	
E(°)	m	ton	m	ton	m	ton	m	ton	m	ton	m	ton
80	7.9	3.00	10.7	1.70	12.5	1.00	9.9	2.00	14.2	0.90	17.5	0.60
77	10.2	3.00	12.9	1.70	14.5	1.00	12.8	2.00	16.6	0.90	19.6	0.60
76	11.0	3.00	13.6	1.70	15.2	1.00	13.4	1.85	17.4	0.90	20.3	0.60
75	11.8	3.00	14.3	1.67	15.8	0.96	14.2	1.74	18.1	0.87	21.0	0.57
70	15.2	2.20	17.6	1.44	18.9	0.86	18.2	1.35	21.9	0.80	24.4	0.53
65	18.5	1.75	20.8	1.25	21.9	0.80	21.9	1.10	25.4	0.72	27.5	0.49
60	21.7	1.40	23.7	1.10	24.7	0.75	25.5	0.90	28.7	0.64	30.3	0.46
55	24.6	1.10	26.5	0.95	27.2	0.70	28.9	0.73	31.7	0.56	33.0	0.43
50	23.7	0.70	29.0	0.65	29.5	0.60	31.9	0.55	34.4	0.45	35.3	0.40
46	29.3	0.45	30.8	0.45	31.1	0.40	34.1	0.35	36.4	0.30	36.9	0.25
45	29.8	0.40	31.2	0.40	31.5	0.35	34.6	0.30	36.8	0.25		
42	31.2	0.25	32.4	0.25								

C = Jib length D = Jib offset E = Boom angle

Sergi Cranes

UNIT NO: 32

SIZE: TADANO 25T

HEIGHT: 3700mm

